



A Geographical Analysis of Occupational Structure in Nagar Tahsil

Dr. Sanjay Mahadeo Shinde

Smt. S. K. Gandhi Arts, Amolak Science &

P. H. Gandhi Commerce College, Kada.

ABSTRACT

This study investigates the occupational composition of Nagar Tahsil in Ahmednagar District, Maharashtra, India, using data from the Census of India (2011). It categorizes workers into primary, secondary, and tertiary sectors in order to explore spatial and sectoral trends. The results indicate that agriculture continues to be the primary occupation in the rural areas of tahsils, whereas urban regions, especially Ahmednagar City, exhibit a greater proportion of employment in the secondary and tertiary sectors. The differences in occupational structure across areas are shaped by factors such as urbanization, infrastructure, and education levels. This analysis underscores the importance of achieving balanced economic growth and diversifying employment opportunities in rural areas.

Keywords: *Occupational structure, Nagar Tahsil, Ahmednagar, workforce, primary sector, secondary sector, tertiary sector, rural–urban distribution.*

1. INTRODUCTION

Occupational structure serves as a crucial indicator of a region's socio-economic progress, illustrating how the workforce is spread across various sectors and shaped by both natural and human influences. Nagar Tahsil, which includes the city of Ahmednagar, stands out as one of the most economically vibrant areas within Ahmednagar District. While agriculture remains predominant in rural regions, urban areas are branching into manufacturing, commerce, transportation, and services. This study offers a geographical examination of the occupational structure in Nagar Tahsil, focusing on the composition of sectors and spatial distribution patterns.

2. OBJECTIVES

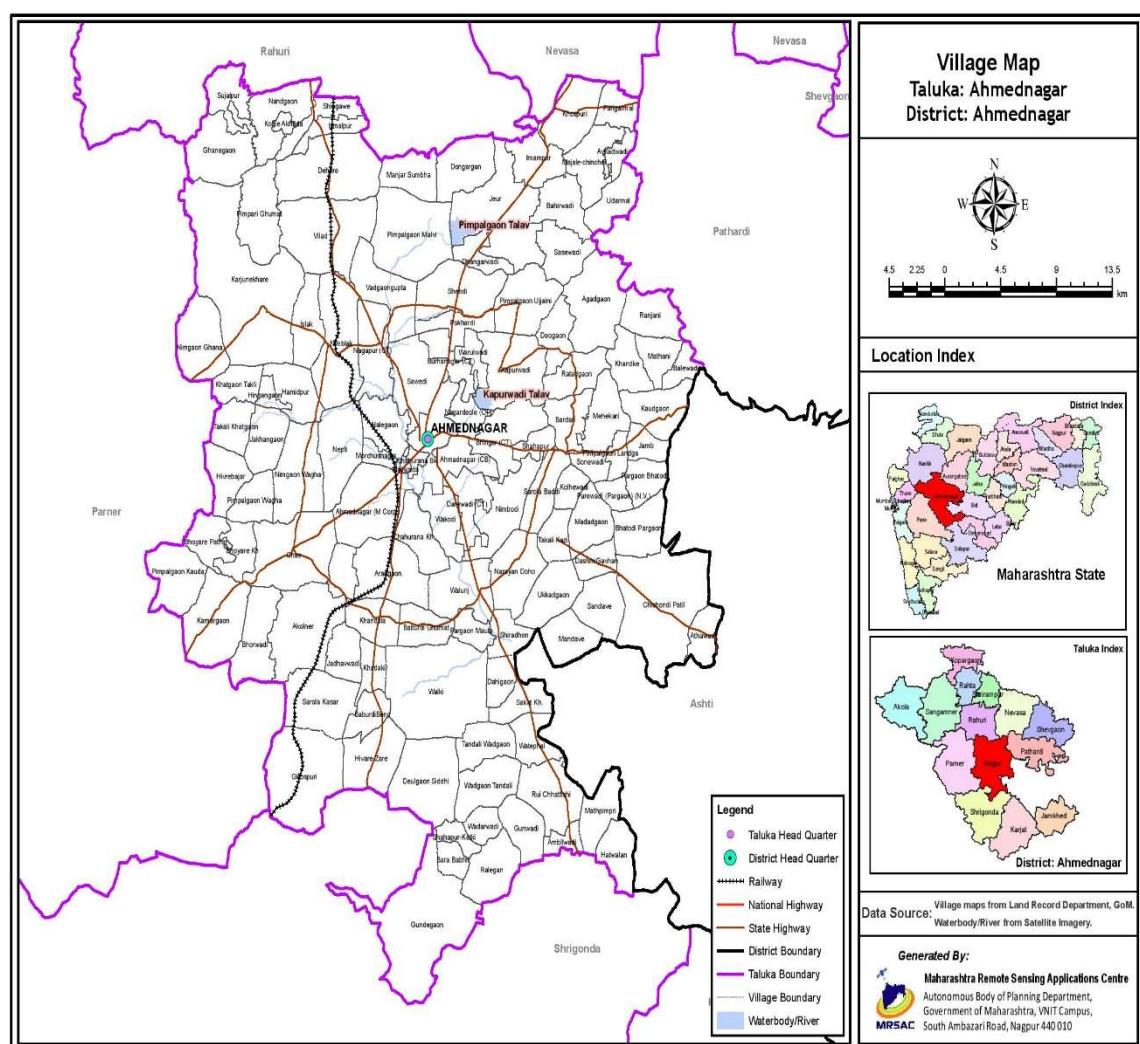
- i. To analyze how workers are distributed across different economic sectors in Nagar Tahsil.
- ii. To explore the differences in occupational structures between rural and urban areas.
- iii. Determining the geographical factors that affect occupational patterns.

3. STUDY AREA

Nagar Tahsil is situated in the western region of Ahmednagar District in Maharashtra, spanning approximately 1,550 square kilometers. This tahsil encompasses Ahmednagar City, a significant urban hub, and numerous nearby rural villages. The area boasts good road and rail connectivity, features a semi-arid climate, and relies on canals and well irrigation for its agricultural activities.

Map No. 1

Map of Study Area



4. DATA BASE AND METHODOLOGY

This research utilizes secondary data sourced from the Census of India (2011), District Census Handbook of Ahmednagar, and pertinent government reports. The working population is classified as follows:



- i. The primary sectors include agriculture, forestry, fishing, and mining.
- ii. The secondary sector encompasses the manufacturing, construction, and small-scale industries.
- iii. The tertiary sector includes trade, transport, communication, administration, and services.

Spatial patterns are depicted using statistical methods, such as percentages and ratios, as well as cartographic techniques, such as choropleth maps.

5. OCCUPATIONAL STRUCTURE IN NAGAR TAHSIL

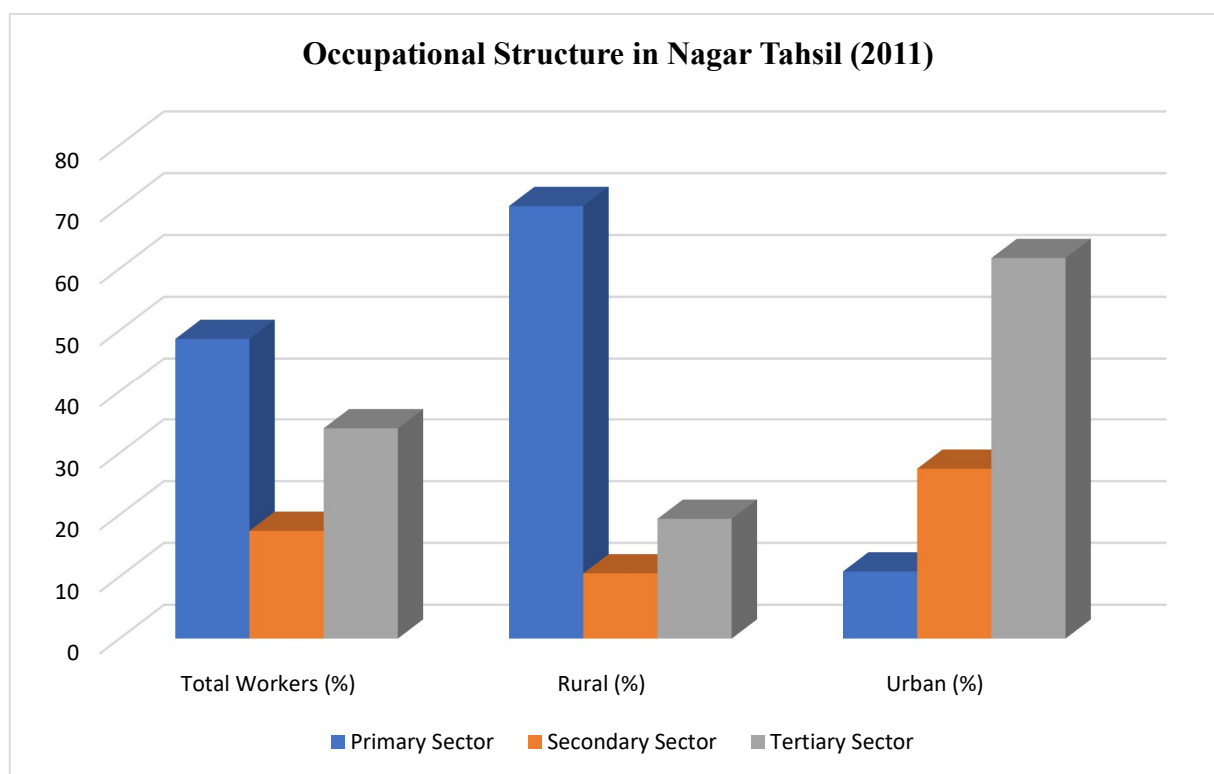
Table No. 1

Occupational Structure in Nagar Tahsil (2011)

Sr. No.	Sector	Total Workers (%)	Rural (%)	Urban (%)
1	Primary Sector	48.62	70.14	10.83
2	Secondary Sector	17.39	10.52	27.46
3	Tertiary Sector	33.99	19.34	61.71

Source: District Census Handbook, 2011.

Graph No. 1





INTERPRETATION:

- i. In rural regions, agriculture remains the primary source of employment, accounting for more than 70% of the workforce.
- ii. By contrast, urban areas are predominantly driven by the service sector, with significant activities in education, healthcare, commerce, and government services.
- iii. The secondary sector is primarily located in the industrial and construction zones of Ahmednagar.

6. SPATIAL PATTERNS

- i. In villages situated along the Sina River and in areas designated for irrigation, there is a higher level of employment in agriculture.
- ii. Activities related to trade, services, and transportation are predominant in the urban wards of Ahmednagar.
- iii. Regions close to industrial zones, such as the MIDC Ahmednagar, exhibit increased involvement in the secondary sector.

7. FACTORS INFLUENCING OCCUPATIONAL STRUCTURE

1. **Physical environment:** The quality of the soil and availability of irrigation systems play a crucial role in determining agricultural prominence in rural areas.
2. **Urbanization:** The presence of educational institutions, marketplaces, and government offices in Ahmednagar city fosters employment in the tertiary sector.
3. **Infrastructure:** Improved transportation and communication networks contribute to the expansion of industrial and service sectors.
4. **Education:** Higher literacy levels in urban regions support a wide range of occupational opportunities.

8. CONCLUSION

The occupational structure of Nagar Tahsil reveals a dual economy, in which agriculture is the mainstay of rural livelihoods, while urban employment is primarily driven by the service sector. There is a noticeable transition from the primary sector to the secondary and tertiary sectors spurred by urban expansion and infrastructure improvements. Implementing policies that focus on rural industrialization, skill development, and growth of the service sector can facilitate balanced regional development.



REFERENCES

1. Census of India (2011). District Census Handbook: Ahmednagar. Directorate of Census Operations, Maharashtra.
2. Chandna, R.C. (2016). Geography of Population. Kalyani Publishers.
3. Hussain, M. (2015). Human Geography. Rawat Publications, Jaipur.
4. Government of Maharashtra (2020). Economic Survey of Maharashtra. Directorate of Economics and Statistics.
5. Singh, R.L. (2014). Elements of Economic Geography. Kalyani Publishers.